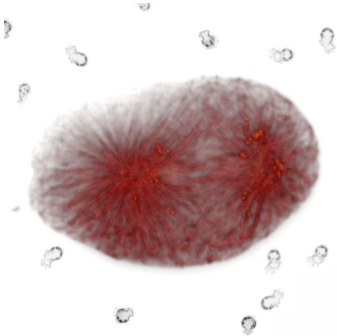




Post-doc in Reproductive Biology – IBPS PARIS



We are looking for a postdoctoral candidate to work on mitochondrial inheritance. **We are interested in understanding the cell and developmental mechanisms of uniparental and maternal mitochondrial genome inheritance.** The lab is currently investigating how sperm mitochondria are targeted for degradation and how maternal contribution remains homoplasmic throughout generations. We are using live imaging and genetic screens on *C. elegans* to tackle these two fundamental questions.

Financing for this postdoc is available initially for 12 months with the possibility for renewal. Our group is part of the IBPS (Institut de Biologie Paris-Seine) in the Department of Developmental Biology. Our Institute is located on the campus of University Pierre and Marie Curie in the heart of Paris. State-of-the-Art imaging equipment is available in the lab and in the facility.

The candidate is expected to be a PhD, with no or max. 2 years of postdoctoral experience and with a solid background in Cell Biology/Molecular Biology. Experience with live cell imaging will be an advantage. He/she should be interested in reproduction and mitochondrial inheritance. The candidate should be fluent in English, and is expected to have obtained/obtain at least one first author publication in a peer-reviewed journal from his/her PhD work.

Interested candidates should send their CV including research interests and contact details of two referees in a single pdf file to vincent.galy@upmc.fr. Priority will be given to applications received before September 15th, but the position will remain open until a suitable candidate has been found.